



International Journal of Innovative Research in Science Engineering and Technology (IJIRSET)

(A Monthly, Peer Reviewed, Refereed, Scholarly Indexed, Open Access Journal)



Impact Factor: 8.699

Volume 15, Issue 1, January 2026

Textile Reinforced Composites for Automotive Applications

R. R. Joshi ¹, Kajal Giri ²

Assistant Professor, Department of Textile Engineering, DKTE Society's Textile and Engineering Institute,
Ichalkaranji, Maharashtra, India¹

Student, Department of Textile Engineering, DKTE Society's Textile and Engineering Institute, Ichalkaranji,
Maharashtra, India²

ABSTRACT: Textile-reinforced composites are increasingly used in automotive engineering due to their excellent strength-to-weight ratio, design flexibility, and capacity to reduce vehicle mass and fuel consumption [1]. Automotive applications of fiber-reinforced polymers (FRPs) began with the Chevrolet Corvette and have since expanded across structural and non-structural vehicle components [1]. This paper expands on foundational knowledge by integrating updated insights on natural fiber sustainability, hybrid reinforcement strategies, crashworthiness behavior, advanced textile architectures, and modern manufacturing innovations. Recent studies show that natural-fiber composites can reduce component weight by up to 30% while lowering carbon emissions throughout the vehicle life cycle [2]. Hybrid natural-synthetic textile composites have demonstrated favorable energy absorption performance under crash conditions, making them viable for impact-loaded structures [3]. Additionally, architectural innovations in woven textiles have significantly improved fracture resistance, delaying crack propagation and increasing durability [4]. This comprehensive review highlights the evolving importance of textile composites as lightweight and sustainable automotive materials.

KEYWORDS: Textile composites, Automotive lightweighting, Fiber-reinforced polymers, Natural fiber composites, Resin transfer molding, and Crashworthiness.

I. INTRODUCTION

Composite materials have revolutionized automotive design because they offer unique benefits unattainable with traditional metallic systems. Beyond weight reduction, composites provide superior corrosion resistance, tailored stiffness, and vibration damping, essential for improving passenger comfort and long-term part durability [1]. Compared with metals, textile composites can be engineered to deliver directional strength, allowing automotive designers to reinforce only those regions subjected to high stress, thereby optimizing component efficiency and lowering material usage [1].

As global emission regulations tighten, the automotive industry is shifting from internal combustion engines toward hybrid and electric vehicles. This transition further amplifies the need for lightweight materials because reducing mass directly increases the driving range of electric vehicles, lowering battery consumption and improving efficiency [2]. Consequently, textile composites have become a strategic material class, enabling OEMs to meet fuel-efficiency targets and sustainability commitments simultaneously [5].

Recent studies emphasize that combining textile technology with composite science results in materials possessing high specific strength, excellent energy absorption, and enhanced fatigue resistance, characteristics essential for next-generation lightweight vehicles [7].

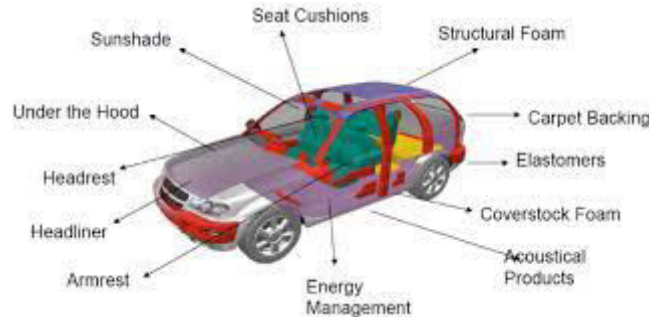


Figure 1- General automotive composite components diagram.

II. REQUIREMENTS FOR AUTOMOTIVE COMPOSITE MATERIALS

The automotive sector sets performance benchmarks for composite materials that extend beyond weight reduction. These materials must also withstand cyclic mechanical loading, extreme temperature variations, chemical exposure, and long-term UV degradation, ensuring adequate durability throughout the vehicle's service life [1].

Additionally, automotive composite parts should exhibit dimensional stability, low creep behavior, and minimal thermal expansion, especially for structural applications near the engine bay, underbody, or suspension systems where temperature fluctuations are intense [7].

Another major requirement is predictable crash behavior. Composites must fail in controlled, energy-absorbing modes, avoiding brittle fracture patterns that compromise vehicle safety [3]. This makes delamination resistance, matrix toughness, and interfacial strength key selection factors for both matrix and fiber systems [4].

To support sustainable manufacturing, composites must also integrate into closed-loop recycling pathways, motivating increased research into thermoplastic matrices and natural fibers compatible with recovery processes [6].

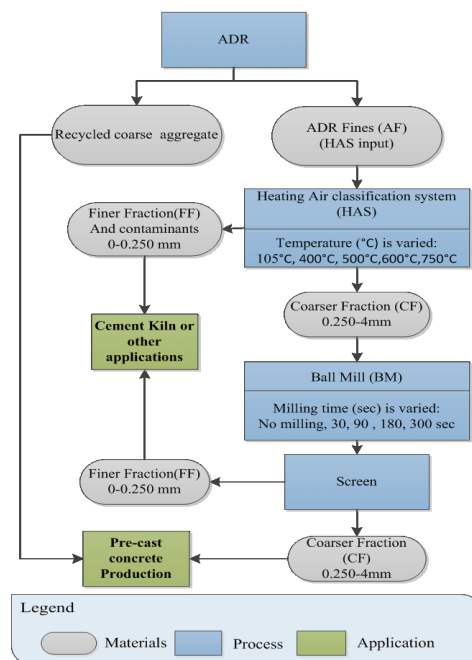


Figure 2-Diagram showing material requirements

III. SYNTHETIC FIBERS

3.1 Glass Fibers

Glass fibers offer a good balance of cost and performance but demonstrate lower fatigue resistance compared to carbon fibers, which limits their application in high-stress structural components [1]. They also have higher density, which reduces weight-savings potential relative to natural fibers or carbon fibers [1]. Nevertheless, due to their processing ease and mechanical reliability, glass fiber composites remain dominant in bumper beams, headlamp housings, and body panels [9].

3.2 Carbon Fibers

Carbon fibers provide high stiffness, tensile strength, and exceptional fatigue resistance, making them ideal for high-performance vehicles. Their use is expanding into electric vehicle battery casings, seat structures, and underbody shields due to the demand for impact-resistant but lightweight protective structures [9]. Even though cost remains a barrier, emerging low-cost precursor materials and automated fiber placement technologies are expected to reduce expenses significantly in the coming decade [7].

3.3 Aramid Fibers

Aramid fibers such as Kevlar are valued for their outstanding impact and ballistic resistance. Automotive uses include reinforced tires, protective shields, and high-strength belt systems [1]. Despite limited use in large structural parts, aramid textiles play an important role in energy-dissipating layers, helping improve composite crash performance [3].



Figure 3- Comparatively image of Glass, Carbon and Aramid Fibers.

IV. NATURAL FIBERS

Natural fibers have experienced a resurgence in automotive applications thanks to their sustainability, low cost, and compatibility with thermoplastic matrices. Beyond door panels and interior components, natural-fiber composites are now being explored for semi-structural parts such as battery covers, seat shells, and front-end modules, demonstrating promising stiffness-to-weight performance [2].

Despite their environmental advantages, natural fibers face moisture absorption issues which can swell fibers, weaken bonding, and reduce mechanical strength [1]. To counter this, advanced alkali-silane hybrid treatments, acetylation, and plasma surface treatments are increasingly adopted to improve fiber-matrix adhesion and protect against humidity [6]. Research shows that combining natural fibers with glass or carbon fibers in hybrid composites can lead to optimized stiffness, superior damping, and improved crash performance, while still retaining a lower environmental footprint compared to full synthetic composites [3].



Figure 4- Natural Fiber used in textile composite.

V. TEXTILE STRUCTURES FOR COMPOSITES

Woven Fabrics

Woven fabrics continue to excel due to their controllable fiber alignment and predictable mechanical behavior. Multi-layer woven structures can be engineered for multi-directional reinforcement, enabling improved performance in areas subjected to complex stress patterns [4].

Braided Structures

3D braided structures are particularly valued for energy-absorbing automotive crash components because they exhibit stronger resistance to splitting and delamination during impact loading [3]. Braiding also allows the creation of near-net-shape preforms, reducing waste and production time [7].

Knitted Fabrics

Knitted reinforcements, though weaker than woven ones, remain useful for curved, complex shapes where high drapability is essential. This makes them valuable in seat structures, interior coverings, and localized reinforcement zones [1].

Nonwoven Structures

Nonwoven mats reinforced with thermoplastic fibers improve acoustic damping, thermal insulation, and crash energy distribution, making them effective in areas like floor panels, insulation boards, and trunk linings [1].

VI. MATRIX MATERIALS

Polymer matrices continue to dominate due to their versatility. Thermoplastic matrices offer advantages such as rapid processing, recyclability, and thermal weldability, making them suitable for large-scale automotive production [9]. Thermoset matrices, although less recyclable, offer high thermal resistance and dimensional stability, making them ideal for load-bearing structures exposed to high temperatures [1].

Recent innovations include bio-based epoxy resins, recyclable thermoplastic polyurethanes (TPU), and low-viscosity resin chemistries that improve impregnation of dense textile preforms [6].



Figure 5- Matrix materials used u=in textile composite.

VII. MANUFACTURING PROCESSES

Automated processes such as automated fiber placement (AFP), robotic weaving, and high-pressure resin transfer molding (HP-RTM) are revolutionizing composite production by decreasing cycle times and improving consistency [7].

Compression molding of natural-fiber mats continues to grow due to its fast cycle time and ability to integrate multiple functional layers (acoustic, thermal, and structural) into a single component [2].

Emerging processes such as thermoforming of continuous fiber thermoplastic sheets and overmolding allow for mass production of complex hybrid structures with metal reinforcements [9].

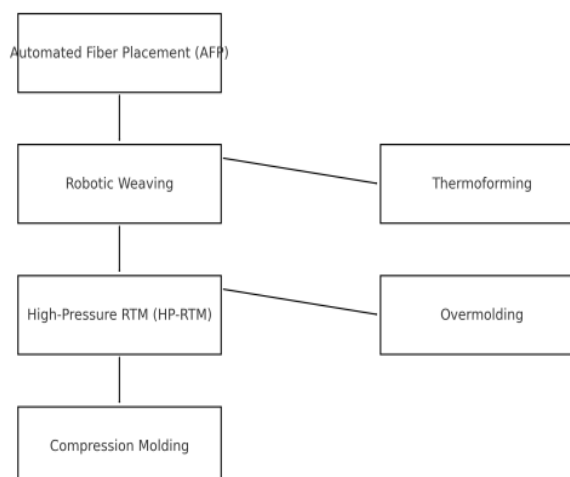


Figure 6- Manufacturing Process of Textile Composites.

VIII. AUTOMOTIVE APPLICATIONS

Textile composites are now used in:

- battery enclosures,
- hybrid structural components,
- front-end carriers,
- engine undertrays,
- seat shells,
- trim brackets,
- load floors,
- instrument panel supports,
- air-intake modules [7].



Figure 7- Applications of Textile Composite.

Crashworthy thin-walled composite tubes made from braided or hybrid textile reinforcements are being deployed in new electric vehicle platforms to protect the battery pack during collisions [3]. Natural fiber composites are additionally favored in premium interiors for their warm texture, acoustic performance, and biodegradability [2].

IX. CHALLENGES

Even as textile composites become mainstream, challenges remain:

- Moisture-induced degradation, particularly in natural fibers [1]
- Fiber misalignment during textile processing [4]
- Difficulty achieving consistent quality in low-cost bio-fibers [6]
- Recycling limitations of thermoset resins [9]
- Complex simulation requirements for predicting composite failure [3]

Addressing these issues requires further innovations in surface treatments, matrix chemistry, automated inspection, and computational modeling.

X. CONCLUSION

Textile-reinforced composites have become essential in automotive engineering due to their superior strength-to-weight ratio, design flexibility, and ability to significantly reduce vehicle mass [1]. Advancements in textile architectures such as woven, braided, and hybrid fabrics have improved crash performance, impact resistance, and durability in both structural and semi-structural components [4]. Natural-fiber composites further support sustainability goals by lowering emissions, reducing cost, and enabling recyclable thermoplastic systems [2][6]. Manufacturing innovations, including

automated fiber placement and high-pressure RTM, are making composite production faster and more cost-effective for large-scale vehicle platforms [7]. Although challenges such as moisture sensitivity, recyclability limitations, and complex failure prediction remain, ongoing research continues to address these issues [1][9]. Overall, textile composites will play a growing role in lightweight, high-performance, and environmentally responsible automotive design [10].

REFERENCES

- [1] Pamuk, G., & Ceken, F. (2008). Textile Reinforced Composites for Automotive Applications. CIRAT-3 Conference Proceedings.
- [2] Sharma, P., & Gupta, N. (2023). Natural Fibre Composites for Sustainable Lightweight Automotive Materials. Samriddhi Journal.
- [3] Rahman, M., T. Ahsan, & S. Chowdhury. (2024). Natural Fibre and Hybrid Composite Thin-Walled Structures for Automotive Crashworthiness: A Review. Journal of Composite Structures.
- [4] Park, J., Smith, T., & Luo, Z. (2024). Architected Textile Composites: Influence of Hybrid Weave Structure on Mode-I Fracture Toughness. arXiv Preprint.
- [5] Kumar, A., Verma, R., & Laghari, M. (2024). Sustainable Materials in Automotive Manufacturing: A Review of Lightweight Polymers and Composites. Materials Today: Proceedings.
- [6] Ali, R., Banerjee, I., & Mukherjee, K. (2024). Potential of Lignocellulosic Fibre-Reinforced Polymer Composites for Automobile Part Production: Current Knowledge and Future Research Needs. Heliyon (ScienceDirect).
- [7] Fernandez, L., Sethi, S., & Miller, J. (2023). Automation and Digital Processing Techniques for Textile Composite Manufacturing. Journal of Manufacturing Processes.
- [8] Singh, R., & Patel, D. (2024). Bio-Based Composite Materials for Circular Automotive Systems. Journal of Renewable Materials.
- [9] Mehta, S., R. Shah, & P. Thakur. (2023). Advances in Thermoplastic Composites for Automotive Lightweighting. Polymer Engineering & Science.
- [10] Das, S. (2022). Emerging Trends in Structural Polymer Composites for Transportation Applications. Transportation Materials Review.
- [11] <https://www.google.com/url?sa=i&url=https%3A%2F%2Fwww.fiberjournal.com%2Fnatural-fiber-composites-a-practical-guide-for-industrial-utilization%2F&psig=AOvVaw3RliVDqFroZi-3oD41c82n&ust=1764833734532000&source=images&cd=vfe&opi=89978449&ved=0CBgQjhxqFwoTCICF5JH0oJE DFQAAAAAdAAAAABAE>
- [12] https://www.google.com/url?sa=i&url=https%3A%2F%2Fwww.researchgate.net%2Ffigure%2FFlowchart-of-the-recycling-process_fig7_303499157&psig=AOvVaw1G12UuWENFINIqN8bShxkK&ust=1764761178201000&source=images&cd=vfe&opi=89978449&ved=0CBgQjhxqFwoTCKj6revlnpEDFQAAAAAdAAAAABAE
- [13] https://www.google.com/url?sa=i&url=https%3A%2F%2Fwww.researchgate.net%2Ffigure%2FFig-7-Automotive-parts-that-can-be-replaced-with-composite_fig4_320210095&psig=AOvVaw2cMjbHcYxtgrwUwvm2PiIR&ust=1764836860107000&source=images&cd=vfe&opi=89978449&ved=0CBgQjhxqFwoTCLiQjOL_oJEDFQAAAAAdAAAAABAE



INTERNATIONAL
STANDARD
SERIAL
NUMBER
INDIA



INTERNATIONAL JOURNAL OF INNOVATIVE RESEARCH

IN SCIENCE | ENGINEERING | TECHNOLOGY

 9940 572 462  6381 907 438  ijirset@gmail.com



www.ijirset.com

Scan to save the contact details